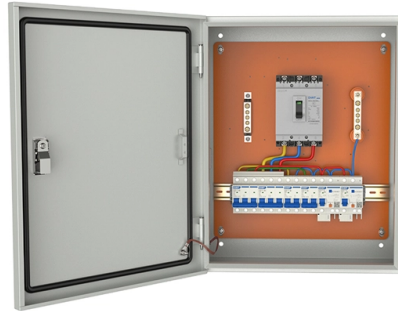


Burial depth of heavy armored optical cable



Overview

Bury cables from 12-36 inches (or 30-90 cm) deep. Where plant life, sidewalks, and other utilities already disrupt earth, it's safer to bury at as little as 24 inches or 60 cm, using protective conduits to limit the likelihood of damaged cables by inexperienced maintenance or. Bury cables from 12-36 inches (or 30-90 cm) deep. However, simply hitting this depth isn't enough to guarantee your network survives. Factors like the. When planning a fiber optic network installation, one of the most common questions is: How deep are fiber optic cables buried?

Proper burial depth is critical for the safety, durability, and performance of your communication infrastructure. This. Typically, burial depths range from 0. 5 meters, balancing protection with installation cost and accessibility. With fiber deployments accelerating in urban and rural areas, understanding these depths is essential for efficient planning and maintenance. There are multi-core versions for backbone functions.



Article Content

How Deep is Fiber Optic Cable Buried: A Technical Guide

The global fiber optic network, spanning over 1.8 million km as of 2025 (per TeleGeography), is a cornerstone of 5G rollouts, rural

Burial depth standard for direct buried optical cable

When the optical cable is laid in areas with large terrain fluctuations (such as mountains, dry ditches, etc.), it should meet the specified requirements for buried depth and radius of curvature.

How Deep Is Fiber Optic Cable Buried? (2025 Nec Standards& Guide)

Wondering how deep is fiber optic cable buried? We explain the NEC requirements (usually 24-30 inches) and why you need Armored Cable for direct burial projects.

Direct-Buried Installation of Fiber Optic Cable

Personnel feeding cable into a feed-chute must make sure that they do not position themselves inside a cable loop. Hearing protection may be required by vehicle operators. Pre-ripping provides a safety

How Deep Are Fiber Optic Cables Buried? Detailed

Learn how deep fiber optic cables are typically buried (12–36 inches) and what factors affect their burial depth. Avoid damage and ensure proper

How Deep is Fiber Optic Cable Buried: Installation Guide

Learn how deep fiber optic cable is buried, key factors affecting buried fiber optic cable depth, and best practice for underground optical fiber installation.

24 Core Outdoor Armored Double Jacket Fiber Optic Cable

24 Core Fiber Optic Cable GYTY53 Outdoor Armored Double Jacket Waterproof Gel Filled loose tube direct burial is used for direct buried underground, it suit for long

12 Strand Outdoor Armored (OSP) OM4 Fiber by the Foot

Our Fiber-By-Foot is in stock and ready to cut to your exact length. This Outdoor Direct Burial Armored cable is extra heavy duty, crush, rodent, and UV resistant.

How Deep Are Fiber Optic Cables Buried? Detailed

The fashion of burying fiber optic cable is different, but its burying depth is usually between 12 and 36 inches (30–90 cm). This disparity depends on

GENERAL INFORMATION

A direct burial installation typically involves heavy machinery and places the optical cable underground in direct contact with the earth and rocks that make up the surrounding soil. All direct burial cable

Burial depth standard for direct buried optical cable

Burial depth standard for direct buried optical cable The burial depth of the direct-buried optical cable shall meet the relevant provisions of the engineering design requirements of the communication

Direct-Buried Installation of Fiber Optic Cable

Cable Precautions / Specifications CAUTION: Take care to avoid cable damage during handling and installation. Fiber optic cable is sensitive to excessive pulling, bending, and crushing forces. Any

Best Direct Burial Fiber Cable Suppliers for Long-Haul

Prysmian Group — Best Direct Burial Cable for heavy-duty OSP engineering Company overview:Prysmian is one of the world's most established cable

Underground Fiber Optic Cable Installation:

Cable Type and Protection Level: Specific fiber optic cable designs, including armored cables, direct burial specifications, and conduit-protected

How Deep is Fiber Optic Cable Buried: A Technical Guide

Typically, burial depths range from 0.3 to 1.5 meters, balancing protection with installation cost and accessibility. With fiber

The FOA Reference For Fiber Optics -Outside Plant

Typically, optical fiber cables do not carry electrical power, but the metallic components of a conductive cable are capable of transmitting current. When the

How Deep Are Fiber Optic Cables Buried? Detailed

Proper burial depth is critical for the safety, durability, and performance of your communication infrastructure. This guide provides a comprehensive overview of

How Deep To Bury Fiber Optic Cable

The ideal depth for burying fiber optic cables varies based on environmental, regulatory, and situational factors, typically ranging between 24 and 48 inches. Ensuring appropriate depth and

Armored vs Non-Armored Fiber Cable: How to Choose | Opelink

Compare armored vs non-armored fiber cable: steel armor protection, tensile strength, installation environments, IEC 60794 mechanical test standards. Choose the right cable for your project.

How Deep is Fiber Optic Cable Buried?

Highlights Proper burial depth is essential to protect fiber optic cables from physical damage, environmental hazards, and signal degradation. Burial

How Deep to Bury Fiber Optic Cable — Depth Guide | TTI Fiber

Here TTI Fiber will share the key factors that determine the ideal burial depth for outdoor fiber optic cable, providing insights into industry standards, best practices, and real-world

72 Core Fiber Optic Cable GYTY53 Outdoor Armored

72 Core Fiber Optic Cable GYTY53 Outdoor Armored Double Jacket Waterproof Gel Filled loose tube direct burial is used for direct buried underground, it suit for long

Underground Fiber Optic Cable: The Complete Guide

Comprehensive guide to underground fiber optic cable types, installation, pricing, conduit systems, standards, and armored solutions for projects.

UF Cable Burial Depth: Key Guidelines

Find the correct UF cable burial depth for safety and compliance. Learn how soil, climate, and regulations impact installation. Click to explore expert-recommended depths and avoid costly

Contact Us

For more information, pricing, or custom solutions, please contact us:

Website: <https://buglerdental.co.za>

Email: sales@buglerdental.co.za

Phone: +27 71 549 2836

Address: 22 Impala Crescent, Waterfall Business Estate, Midrand, 1685, South Africa

This document is for informational purposes only. Specifications subject to change without notice.

