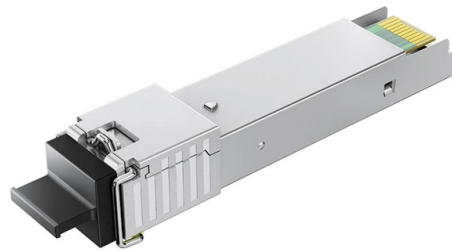


Grounding of the outgoing terminal of the outdoor distribution box



Overview

Grounding of the units: Attach a ground wire from one of the threaded studs (A) at the bottom of the housing, to the mounting plate (B). The ground resistance between. Power from factory ground must be installed by a qualified electrician. Each DISTRIBUTION BOX and controller must be grounded. The drive system in this manual consists of the supply transformer, input power cable of the drive, the variable speed drive (frequency converter), motor cable and motor. Whether you're a seasoned pro or just starting out, this comprehensive guide will give you practical. Abstract: System grounding considerations affect many aspects of an electrical system. The voltage, system arrangement, loads connected, and continuity of. In outdoor or industrial electrical environments, the metal casing of the ip65 stainless steel enclosure must form a complete conductive circuit. Due to the high hardness of stainless steel, drilling holes later is not only laborious but also easily damages the anti-corrosion layer. We. Safety of Personnel: By safely channeling fault currents into the ground, proper grounding helps to reduce the risk of electric shock to personnel. Equipment Protection: Grounding protects substation.

Article Content

TECHNICAL SPECIFICATION FOR OUTDOOR TYPE DISTRIBUTION

manufacturer's works, packing, forwarding, supply and unloading at store/site and performance of Plot & Service junction box with all accessories for trouble free and efficient operation. This outdoor Plot &

Grounding System Installation Standards for Distribution Boxes and ...

Whether you're a seasoned pro or just starting out, this comprehensive guide will give you practical insights into proper grounding techniques, with a special focus on how selecting quality materials

Internal Structure of Distribution Box

What Is a Distribution Box? The distribution box can also be called a distribution board or an electrical panel. It is a centralized electrical unit designed

Stainless Steel Distribution Box Installation Manual: How To Properly ...

When inspecting the interior of a stainless steel outdoor electrical box distribution box, pay attention to the copper or tin-plated terminals on the base plate or side walls. These locations are usually marked

TECHNICAL SPECIFICATION FOR LT DISTRIBUTION BOX

KV 1. DESCRIPTION OF MATERIALS:- The L.T. Distribution Cabinets shall be installed on D.P. Structure for Plinth Mounted 33/.4 KV Substation of the ratings indicated above. These Distribution

GROUND GRID SPECIFICATIONS

PURPOSE AND SCOPE IPMENT, STRUCTURES, ETC. IN ELECTRICAL STATIONS INCLUDING TRANSMISSION AND DISTRIBUTION SUBSTAT GROUNDING OF NON-CURRENT CARRYING

GROUNDING OF UTILITY AND INDUSTRIAL DISTRIBUTION

In this workshop, we will demystify the concepts of grounding as applicable to utility networks and industrial plant distribution systems as well as their associated control equipment.

Distribution System Grounding | part of Electric Power and Energy ...

Improper grounding in secondary systems can cause safety issues including fire and failure of equipment in homes. Most common problems are open secondary neutral, load incorrectly

Basic knowledge of distribution cabinet and distribution box

Function: it is mainly used to distribute energy, distribute the main power supply to each power branch switch, and connect and disconnect the branch power supply

Protective grounding requirements for transmission and

Introduction to protective grounding This technical article covers protective grounding requirements for steel tower and wood pole supported

EN / Grounding and cabling of drive systems reference manual

The purpose of this manual is tell you the grounding and cabling principles of variable speed drive systems. The guidelines help you to fulfill the personnel safety, electromagnetic

Distribution box with standard cable (for up to 4

With this convenient distribution box with a standard pin cable you can connect up to 4 grounding products with a grounded wall socket or a grounded extension cord

Does the Distribution Box Door Need Grounding? Safety Standards FAQ

Without grounding, anyone touching it becomes the path to earth—and gets shocked (or worse). NEC 250.148 doesn't play favorites: The code mandates that all metallic parts of electrical boxes must

How to determine the size, installation method and

(1) Wiring method of distribution box 1) Generally, the incoming line of power distribution box adopts five wire system, that is, a, B and C three-way phase line

24 Port Outdoor Fiber Optic Distribution Box | AZE

AZE's Outdoor Fiber Optic Distribution Box is applicable in FTTH project and suitable for building's outer walls application; They can distribute cables after installing

Nine Recommended Practices for Grounding

Bond all metal enclosures, raceways, boxes, and equipment grounding conductors into one electrically continuous system. Consider the installation of an

Grounding & Bonding Temporary Generators and

Technicians often have an “Anything Goes; It's Temporary” attitude about grounding, bonding, when dealing with the installation of temporary

Grounding Practices in Power Distribution Systems

The installation of grounding methods for transmission lines is absolutely necessary in order to guarantee the safety, dependability, and effectiveness of power

DISTRIBUTION BOX

Each DISTRIBUTION BOX and controller must be grounded. On the US market, a 5.26 mm² (10 AWG) ground wire must be used, and in all other markets a 6 mm² must be used.

9 Recommended Practices for Grounding

Grounding and bonding are the basis upon which safety and power quality are built. The grounding system provides a low-impedance path for fault

GROUND GRID SPECIFICATIONS

Each Power Circuit Breaker or Power Transformer having a bushing Voltage Transformer on the tank shall have the Voltage Transformer provided with a separate ground lead, independent of the

System Grounding

Static Power Converter: For devices such as rectifiers and inverters, the system grounding is determined by the grounding of the output stage of the converter. All categories fall under the NEC definition for a

industrial panel ground | Information by Electrical Professionals for ...

probably better suited in a Industrial Panel Forum somewhere, but I'll try here first... Small Steel Industrial Panel/Enclosure - incoming power is 120V. Power cord enters thru gland into box.

Transmission Line Grounding Guide

When distribution electrical equipment shares the same transmission structure, the grounding conductor can be common or kept separate for the transmission and distribution.

Contact Us

For more information, pricing, or custom solutions, please contact us:

Website: <https://buglerdental.co.za>

Email: sales@buglerdental.co.za

Phone: +27 71 549 2836

Address: 22 Impala Crescent, Waterfall Business Estate, Midrand, 1685, South Africa

This document is for informational purposes only. Specifications subject to change without notice.

