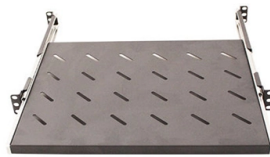


Inspection Conclusion of Optical Cable Junction Box



Webit Cabling

Overview

Visual inspection: Inspect the junction box for any visible signs of damage such as cracks, dents, or wear. Any physical damage could indicate that the box is no longer fully protecting the internal electrical components. Check for stability: Ensure the junction box is. To improve the stability and reliability of the OPGW optical cable junction box, this paper proposes an intelligent monitoring technology, which can comprehensively monitor the environmental temperature, humidity, height, image, internal water immersion and air pressure of the junction box through. This content provides you with a sample junction box inspection and test plan. Junction Box Ancillary items (Bolt, Nut, TERMINALS, ETC.) H: Hold Point implies that relevant production activities shall not proceed until the. Smart Junction Box Diagnostics (FOUNDATION Fieldbus or HART Multiplexers) Step 25. They connect field instruments and control panels in a central way. As we enter 2024, adhering to best practices not only enhances system reliability but also mitigates potential issues that can affect customer experiences.

Article Content

Fiber Optic Junction Box Installation Guide

When fibre optic cable is used, glands must be suitably certified for use with the type of cable so as to maintain the type of protection (Ex db/Ex tb). one thread adapter when an adaptor is used. A blankin

Ultimate Guide to Fiber Optic Distribution Box: Types

Fiber optic technology has revolutionized the telecommunications industry, enabling faster and more reliable data transmission. One essential

Termination of Fiber Optic Cables

This fiber optic installation method statement covers the termination of fiber optic cables with patch panel, network distribution cabinet NDC and door junction box

CFX ITS Inspection Reference & Training Manual

3.0 OVERVIEW OF PULL AND BOXES AND FIBER OPTIC MANHOLES Pull and junction boxes and fiber optic manholes (FOMHs) are integral to any conduit system. They are typically installed in an

ITP for Junction Box Installation

This document provides an inspection test plan for installing instrument junction boxes as part of the Aqaba Screening Project task 5 of APC storing.

Understanding Optical Junction Boxes: Essential Components for

Understanding the significance of optical junction boxes is essential for anyone involved in the electrical and electronic industries, particularly in areas related to fiber optic connectors. An

Inspecting Electrical Connections

In a typical workweek, a home inspector will likely come across issues involving improper wire size, grounding or bonding issues, incorrect overcurrent protection,

Best Practices for Optical Cable Junction Box Installation in 2025

The installation of an optical cable junction box is crucial in ensuring the integrity and performance of optical networks. As we enter 2024, adhering to best practices not only enhances system reliability

All You Need To Know About Fiber Termination Boxes:

Source In this blog, we will discuss the two types of fiber optic cables and the role of a simple yet essential piece of equipment in the fiber laying

Configuration of Optical Fiber Junction Boxes for Outdoor Optical

Conclusion: Configuring optical fiber junction boxes for outdoor optical fiber cables is a critical step in the installation and maintenance of optical fiber networks. By following the best

Which Fiber Optic Junction Box is Best?

When it comes to fiber optic junction boxes, a variety of options are available. Usually, a common question asked by customers is which box is best for their application.

25-Point Instrumentation Junction Box (JB) Wiring and

Ensure safe and compliant instrumentation JB wiring in process plants. Use this detailed 25-point checklist for inspection, termination, and QA verification.

Fiber Terminal Box VS. Junction Box: What is the

Discover the key differences between fiber terminal boxes and junction boxes to choose the right solution for your network setup.

Intelligent Condition Monitoring Technology of OPGW Optical Cable ...

To improve the stability and reliability of the OPGW optical cable junction box, this paper proposes an intelligent monitoring technology, which can comprehensively monitor the...

Junction Box Inspection and Test Plan

This content provides you with a sample junction box inspection and test plan. You need to modify this junction box ITP to meet your specifications.

Optical cable junction box features

Optical cable junction box features□What is an optical cable splice box Optical cable splice box is a popular name, its scientific name is optical cable splicing box, also known as optical

Intelligent Condition Monitoring Technology of OPGW Optical Cable ...

At present, there is no automatic sensing technology for the optical cable junction box. The inspection of the power optical cable junction box is mainly through the manual regular box opening inspection to

Electrical Junction Box Inspection Checklist | PDF

The document appears to be an electrical and mechanical completion check sheet for junction boxes used in the Wortel Field Development Project by Santos

Electrical Panel Inspection Report | PDF | Computers

This document is a field inspection report form for inspecting junction boxes or local control panels. It includes sections for inspection details like type, work and item

How to Maintain and Inspect Your Junction Boxes

Maintaining and inspecting your junction boxes is essential to ensure the continued safety, functionality, and reliability of your electrical systems. Over

Fiber Terminal Box vs Junction Box: Key Differences

Compare fiber terminal box vs junction box in functions, applications, and installation. Learn which suits FTTH fiber vs electrical wiring.

Electrical Junction Box Inspection Report

Project No: Name: Client: INSPECTION TEST REPORT FORM NO: E-04A ELECTRICAL JUNCTION BOX INSPECTION REV. 0 E-04A Project Phase: A -

Electrical Installation Inspection Report

This inspection report checklist is for the fabrication and erection of a cable tray for a modular skid project for Saudi Aramco. The checklist ensures that junction boxes

IEC 62790 - Junction Box and Cable Testing for PV Modules

The IEC 62790 standard applies to junction boxes and cables used in PV modules, focusing on aspects such as electrical insulation, mechanical strength, and thermal performance. Manufacturers must test

Inspection of Electrical Junction Boxes for Sealing and Clarity

One often-overlooked yet critical aspect of electrical system maintenance is the inspection of electrical junction boxes for sealing and clarity. Real-World Applications: Why Electrical Junction Boxes Matter

Electrical Installation Inspection Report

The checklist ensures that junction boxes and local control panels are properly installed according to the layout and specifications, are undamaged, aligned

How Does an Optical Junction Box Work?

How an Optical Junction Box WorksAn optical junction box (OJB) is a crucial component in fiber optic networks, connecting various fiber strands and facilitating efficient data transmission.

Fiber-Optic Splice Boxes Products NITTO KOGYO

Fiber-Optic Splice Boxes Splice boxes keep joints of fiber-optic cables safe from external stress and manage excess cable lengths. They are also referred to as

Contact Us

For more information, pricing, or custom solutions, please contact us:

Website: <https://buglerdental.co.za>

Email: sales@buglerdental.co.za

Phone: +27 71 549 2836

Address: 22 Impala Crescent, Waterfall Business Estate, Midrand, 1685, South Africa

This document is for informational purposes only. Specifications subject to change without notice.

