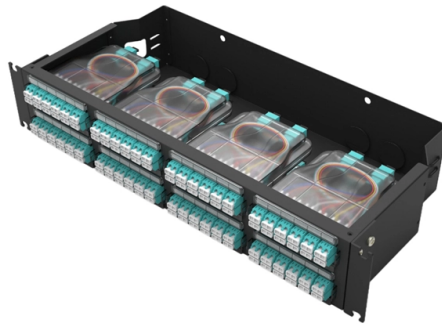


Performance Testing of Outdoor Distribution Boxes in Guyana



Overview

TESTING AND CERTIFICATION – Hi-Pot Test: 2000V + (2 × rated voltage) for 1 minute – Continuity Test: All buses and ground connections – NEMA Rain Test: Per NEMA 250, 4 hours minimum – Test Reports: Provide certified test results

TESTING AND CERTIFICATION – Hi-Pot Test: 2000V + (2 × rated voltage) for 1 minute – Continuity Test: All buses and ground connections – NEMA Rain Test: Per NEMA 250, 4 hours minimum – Test Reports: Provide certified test results

Penalty for assault or obstruction of Minister, public suppliers, or other authorised persons 51. Penalty for failure to install or maintain protective apparatus or damage to public supplier's works 52.

in Guyana is a leading provider of material testing services, supporting a wide range of industries including Marine, Oil & Gas, Manufacturing, Mining, Utilities, and Infrastructure. With an in-depth understanding of the design and performance aspects of process equipment. The Guyana National Bureau of Standard (GNBS) manages the development and publication of standards in Guyana. Key design points include high-quality materials like ABS plastic, aluminum, and stainless steel that resist corrosion and UV. We'll decode NEC Article 312 requirements, compare NEMA vs IP ratings, analyze busbar sizing calculations, and provide specification decision matrices for different applications.

□□ Specification Insight: NEC 312. 2 requires outdoor distribution boxes to have rain-tight enclosures when installed in. High protection rating weather proof junction box typically uses high-strength alloys or engineering plastics, providing enhanced corrosion resistance and impact resistance.

Article Content

Safe & Efficient Power Distribution Boxes | GEYA

Find high-quality distribution boxes from GEYA. Our durable enclosures ensure safe and organized electrical installations.

Guyana Electrical Installation Guidelines | PDF | Wire

Electrical guidelines In Guyana, electrical installation work is regulated to ensure safety, reliability, and efficiency. The primary guidelines and standards for

Key Material Requirements for Distribution Box

Learn the key material requirements for distribution box, Discover how the right materials ensure long-lasting performance and safety.

Power Distribution Boxes: A Complete Overview | Eventech

A: Common types of power distribution boxes used in event technology include portable distribution boxes for temporary setups, rack-mounted boxes for

GUYANA POWER AND LIGHT INC.

GPL-PD-048-2021 The Guyana Power & Light Inc. is committed to providing our customers with a quality electricity supply and a level of service that meets and exceeds the expectations of our

GUYANA STANDARD

Foreword This section of the Guyana National Building Code is comprised basically of a set of minimum requirements regarding the safety of buildings on aspects of fire protection and structural sufficiency.

Description of the difference in IP waterproof ratings for

Waterproof distribution boxes are widely used in various harsh environments, such as outdoors, power facilities, and industrial sites. In order to

The installation requirements for the distribution box

A clean and well-wired distribution box isn't just nice to look at — it's essential for safety, performance, and easy maintenance. Here are a few best

TECHNICAL SPECIFICATION FOR OUTDOOR TYPE

Following tests shall be carried out as per acceptance tests in addition to routine tests on one random sample of each rating out of the lot offered for inspection:

Outdoor ABS Distribution Box,Electrical Distro Boxes

The HTS Series, Outdoor ABS Distribution Box offers numerous enhancements to meet the needs of field professionals. The HTS Series' widened and thickened

How to Choose an Outdoor Distribution Box? What Operation and ...

Smart distribution boxes are the most cost effective solution to solve your indoor or outdoor power outages. Learn about the best practices for selecting outdoor distribution boxes and

ELECTRICITY SECTOR (TECHNICAL STANDARDS)

At the instigation of the Minister, or of a consumer with regard to the works of a public supplier on his premises, inspections and testing of the works of a supplier may be carried out at any time by the

Power Distribution Boxes Explained Simply

Discover the essentials of a Power Distribution Box—how it works, key types, benefits, and tips to ensure safe, efficient electrical power management.

Material testing services

Our services span mechanical and chemical tests for metals, destructive testing for materials like HDPE, and non-destructive testing (NDT), such as ultrasonic, magnetic particle, and Eddy Current testing.

Outdoor Distribution Box SHA Series

Outdoor distribution box should be installed in an area close to the power source, and should be selected in an area where electrical equipment or loads are

Complete Guide For Distribution Boxes Types

Distribution boxes, also known as electrical distribution boards or panels, are pivotal components in electrical systems, ensuring the safe and organized distribution of

Outdoor Fiber Distribution Units - Fiber Savvy

Outdoor Fiber Distribution Boxes For all of your outdoor fiber distribution needs, Fiber Savvy offers an excellent solution. Our Outdoor Fiber Termination Boxes are specially designed to house and protect

Weatherproof Outdoor Distribution Boxes: Key Design Insights

Learn the key design points for weatherproof outdoor distribution boxes to ensure durability, safety, and compliance in challenging environments !

ELECTRICITY SECTOR (TECHNICAL STANDARDS)

(2) The Government Electrical Inspectorate shall advise the Guyana National Bureau of Standards with regard to the inspection, testing and approval of electrical items for use in installations, and the

Guyana National Bureau of Standards

To meet the needs of our stakeholders, the GNBS has established GNBSGuy, an online standards database platform. Via this platform users can browse standards available at the GNBS.

Indoor vs Outdoor Distribution Boxes for Real Applications

Learn the real differences between indoor and outdoor distribution boxes and how environment, protection level, and materials affect performance.

TECHNICAL SPECIFICATION FOR OUTDOOR TYPE DISTRIBUTION FEEDER PILLAR BOX

1. Scope: This specification covers technical requirements of design, manufacture, testing at manufacturer's works, packing, forwarding, supply and unloading at store/site and performance of

Outdoor Power Distribution Boxes: The Backbone of

Discover how J& HW Group's outdoor power distribution boxes deliver safe, weatherproof, and customizable solutions for modern industrial and

Understanding Distribution Boxes: A Comprehensive Guide

A distribution box, also known as a power distribution box or electrical distribution box, is used to distribute electrical power safely to multiple

Power Distribution Boxes

Power Distribution Boxes Manufacturer Custom power distribution boxes featuring precise sheet metal fabrication, designed for efficient power management.

Outdoor Electrical Distribution Box Specifications: NEC

This specification guide provides system designers, electrical engineers, and procurement professionals with the technical criteria needed to

Cable Distribution Box, Outdoor Cable Junction Box

Cable Junction box Advantage Rigorously Tested And Independently Certified Cable Distribution Box Solutions With a state-of-the-art facility, we are able to design

Understanding IP Protection Ratings for Distribution Boxes: Choosing ...

Choosing distribution boxes is a decision that seems technical but has real-world consequences. Getting the IP rating right isn't just about meeting specs - it's about ensuring

Technical Requirements For The Design And Testing Of

High-grade waterproof distribution boxes must pass numerous rigorous tests, including high-pressure water spray, immersion, vibration, and

Contact Us

For more information, pricing, or custom solutions, please contact us:

Website: <https://buglerdental.co.za>

Email: sales@buglerdental.co.za

Phone: +27 71 549 2836

Address: 22 Impala Crescent, Waterfall Business Estate, Midrand, 1685, South Africa

This document is for informational purposes only. Specifications subject to change without notice.

