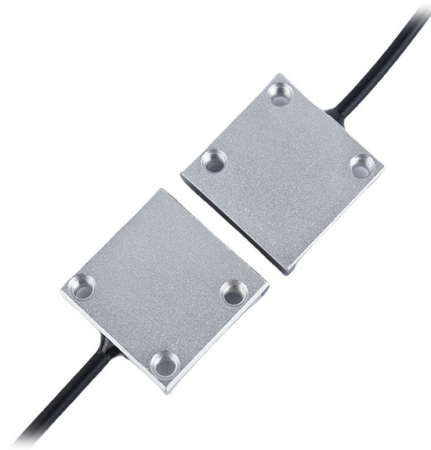


Standard for the length of optical cables connected to junction boxes



Overview

The NEC code of junction box requires at least 6 inches of free conductor length inside each box. Measure from where the wire comes out of the cable sheath or raceway. The Fiber Optic Association, Inc. (FOA) was founded in 1995 to help develop the workforce to build the fiber optic networks to support a rapid expansion in communications and the Internet. The charter of the FOA was to promote professionalism in fiber optics through education, certification, and. Abstract: The design, installation, and protection of wire and cable systems in substations are covered in this guide, with the objective of minimizing cable failures and their consequences. Copyright © 2008 by the Institute of Electrical and Electronics Engineers, Inc. However, it is not always easy to find out what has been covered, and where it can be found. With regard to the ambient conditions, several factors and standardised specifications must be taken into account, in order to select the right junction box for the intended place of use., voice, data, text, video and image). This includes:

- Vertical connection between floors (risers)
- Cables between an equipment room and building cable entrance.

Article Content

FIBER OPTIC CABLE ASSEMBLY MANUFACTURABILITY AND

The purpose of this document is to define the standards and guidelines that should be followed in order to fabricate a harsh environment fiber optic cable assembly. Environmental requirements such as

What Is an Optical Junction Box and Its Benefits?

Conclusion Understanding the role and benefits of an optical junction box is fundamental for anyone looking to set up or enhance a fiber optic network. Following the steps outlined above will

Configuration of Optical Fiber Junction Boxes for Outdoor Optical

Conclusion: Configuring optical fiber junction boxes for outdoor optical fiber cables is a critical step in the installation and maintenance of optical fiber networks. By following the best

Fiber Optic Junction Box Installation Guide

Remove Cover from EXJB. Push wires through Cable Gland and hole in housing. Screw Cable Gland into housing and tighten. needed for insertion into Terminal Blocks.
NOTE - wire lengths will vary

OPTICAL FIBRE CABLE APPLICATIONS GUIDELINES

These involve the transmission of voice, data, or video over distances of less than a meter to hundreds of kilometres, using one of a few standard fibre designs in one of several cable designs. Optical Fibre

Junction Boxes

Junction boxes with screw-type terminals must be installed in locations that allow inspection, testing, and maintenance in compliance with

CFX ITS Inspection Reference & Training Manual

3.0 OVERVIEW OF PULL AND BOXES AND FIBER OPTIC MANHOLES Pull and junction boxes and fiber optic manholes (FOMHs) are integral to any conduit system. They are typically installed in an

TR-3552: Optical network installation guide

When an optical transmitter is connected to an optical receiver through a short length of fiber (back-to-back) and an optical attenuator, the attenuation can be increased to determine the receiver sensitivity.

Optical Fiber Cable Installation Guideline

Also, extra cable should be placed at strategic points such as junction boxes, splice cases and cable vaults. Extra cable is useful should cable repair or mid-span entry be required.

770.133 and junction boxes

So I would like to see if I can get some clarification on some terms and this situation in general: 770.133 in regards to non-conductive fiber and power cables: "Non-conductive optical fiber

Optical fibre cables — Guidelines to the installation of optical fibre cabl

INTRODUCTION Optical fibre cabling provides a high performance communications pathway whose characteristics can be degraded by inadequate installation. This Technical Report provides guidance

Which Fiber Optic Junction Box is Best?

When it comes to fiber optic junction boxes, a variety of options are available. Usually, a common question asked by customers is which box is best for their application.

Standards Reference Guide

Building telecommunications cabling specified by this standard is intended to support a wide range of different commercial building sites and applications (e.g., voice, data, text, video and image).

Fiber-Optic Splice Boxes□Products□NITTO KOGYO

Fiber-Optic Splice Boxes Splice boxes keep joints of fiber-optic cables safe from external stress and manage excess cable lengths. They are also referred to as

IEEE 525-2007_accepted

Fiber-optic cables in substations can be installed in the same manner as metallic conductor cables; however, this practice requires robust fiber-optic cables that can withstand normal construction

All You Need To Know About Fiber Termination Boxes:

Source In this blog, we will discuss the two types of fiber optic cables and the role of a simple yet essential piece of equipment in the fiber laying

Fiber optic junction box, Fiber optic terminal box

Find your fiber optic junction box easily amongst the 67 products from the leading brands (HUBER+SUHNER, BOPLA, METZ CONNECT, ...) on DirectIndustry, the

Instrument Junction Boxes

Junction Boxes in Hazardous Areas Junction boxes, certified suitable for use in potentially Hazardous Areas are available from many manufacturers. Common

Receptacle Boxes and Cable Installation Codes

By installing the appropriate electrical boxes in the right manner, you'll have a safe and great looking installation. The electrical cables that run through

Handbook Optical fibres, cables and systems

A concatenated link usually includes a number of spliced factory lengths of optical fibre cable. The transmission parameters for concatenated links must take into account not only the performance of

Best Practices for Optical Cable Junction Box Installation in 2025

The installation of an optical cable junction box is crucial in ensuring the integrity and performance of optical networks. As we enter 2024, adhering to best practices not only enhances system reliability

Wiring and Installation Guide for Junction Boxes

When inspecting your home's electrical system, you'll find various components, including cables, outlets, switches, circuit breakers, and an essential box known

Fiber-optic cable

Each end of the cable may be terminated with a specialized optical fiber connector to allow it to be easily connected and disconnected from transmitting and receiving

Telecommunications Cabling Standards Reference Guide

A comprehensive guide to telecommunications cabling standards, including ANSI/TIA/EIA-568-B, ISO 11801, and IEEE 802.3. Covers components,

NEC Fiber Art 770 | PDF | Cable | Optical Fiber

Composite optical fiber cables containing only current-carrying conductors for electric light, power and Class 1 circuits rated 600V or less can occupy the same cabinet,

Mounting and installation information for junction boxes

Various standard requirements must be fulfilled so that junction boxes can be installed in specific environments and that the internal installations do not present a safety risk.

Standard for Installing and Testing Fiber Optics

Documentation of the fiber optic cable plant should follow TIA-606, Administration Standard for the Telecommunications Infrastructure of Commercial Buildings or specific customer requirements.

NEC Code of Junction Box Requirements Made Simple

If the box opening is less than 8 inches in any direction, each wire must stick out at least 3 inches from the box opening. This extra length helps you make safe and

Guidance Notes on Recommended Specifications of Junction Box and Cable ...

Foreword These Guidance Notes provide ABS recommendations for the design and construction of cable trays and junction boxes. These Guidance Notes are applicable to fixed and floating offshore

Fiber Optic Junction Box Installation Guide

Use only shielded cable. Temperatures at the cable entry can reach 80° C. Selection of cable must be appropriate for the ambient temperature range in which the product is used.

IEEE 525-2007_accepted

Fiber-optic cable installation shall meet the requirements of the National Electrical Safety Code® (NESC®) (Accredited Standards Committee C2-200211). Although the National Electrical Code®

Optical Cable Junction Boxes: Functions and Features

The structure of the optical cable junction box consists of several parts: to the casing, internal components, seals, fiber fusion panel, etc. Housing

How to Choose the Right Optical Junction Box?

Choosing the right optical junction box is crucial for ensuring the performance, reliability, and longevity of your optical networks. With the increasing demand for high-speed internet and

Guide to Junction Boxes

This is further reinforced in Appendix 15 of the Wiring Regulations which states “Junction boxes with screw terminals must be accessible for inspection, testing & maintenance or, alternatively, use

FOA Standard For Installing Fiber Optic Cable Plants

This standard describes procedures for installing and testing cabling networks that use fiber optic cables and related components to carry signals for communications, security, control and similar purposes.

SPECIFICATION STANDARD OPTICAL FIBER BACKBONE

Indicate location of all outlets, distribution cable trays, junction boxes, FDU with configuration, optical fiber cable equipment rack layout with cable designators and counts and all additions and deletions

The Types of fiber Optical Terminal Boxes and How to

A box that comes with clear installation instructions and is easy to access for maintenance will save time and effort in the long run. By considering

Understanding Fiber Optic Junction Boxes: A Comprehensive ...

A fiber optic junction box, also known as a fiber optic distribution box or termination box, is a protective enclosure that

Contact Us

For more information, pricing, or custom solutions, please contact us:

Website: <https://buglerdental.co.za>

Email: sales@buglerdental.co.za

Phone: +27 71 549 2836

Address: 22 Impala Crescent, Waterfall Business Estate, Midrand, 1685, South Africa

This document is for informational purposes only. Specifications subject to change without notice.

