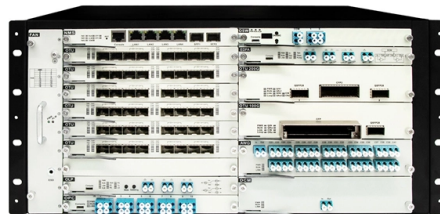


# What to do if a PoE switch experiences a power outage



## Overview

Insufficient Power - First, check the powering switch, its power management configuration, and if it's working properly. Also check if there is required amount of. In a basic PoE power supply system, the major components are the power sourcing equipment (PSE), the powered device (PD), and the PoE cables. PoE devices connected to the device are not drawing power. The solution for troubleshooting a PoE issue includes trying the steps outlined below before concluding that the issue is due to configuration problems. Power over Ethernet (PoE) simplifies device deployment by delivering both data and power over a single Ethernet cable. However, when PoE fails, it can disable critical infrastructure like IP phones, wireless access points, and security cameras. This guide provides a step-by-step troubleshooting. This article provides a detailed, step-by-step troubleshooting guide focusing on Cisco Catalyst 9300 switches, supplemented by general principles applicable to other models like the 2960. Here are some common PoE issues and how to troubleshoot them: 1.

## Article Content

PoE Load Testing and Troubleshooting | Fluke Networks

PoE not working? Learn how to troubleshoot a variety of potential causes. Also learn how power is allocated to devices and how to check PoE on a

Troubleshoot Power over Ethernet on Catalyst 9000 Switches

Introduction This document describes how to troubleshoot Power over Ethernet (PoE) on Catalyst 9000 PoE-capable switching platforms.

Strange loss of PoE during power outage

POE devices attached to the switch get a power off/on cycle. I can think of two ways to approach this. The first is to use a lot of expensive test equipment to measure the output of the UPS

Configuring Power Over Ethernet

Configuring Power Over Ethernet If the switch detects a fault caused by an undervoltage, overvoltage, overtemperature, oscillator-fault, or short-circuit condition, it turns off power to the port,

How to Troubleshoot PoE | Common Issues, Commands

Learn how to troubleshoot PoE issues on Cisco Catalyst switches. Step-by-step diagnosis for no power, intermittent resets, partial power, and camera failures.

How to solve the problem of troubleshooting PoE power faults?

If the device's power requirements exceed the switch port's power delivery capabilities, the device may experience power faults. Solution: Ensure the device is connected to a port that provides sufficient

PoE Troubleshooting: Common PoE Issues and Solutions

By following these troubleshooting steps, you can address and resolve common PoE issues effectively, ensuring reliable power delivery and optimal performance for your network devices.

How do I troubleshoot problems with my NETGEAR PoE switch?

How do I troubleshoot problems with my NETGEAR PoE switch? This article assists in troubleshooting common Power over Ethernet (PoE) problems with NETGEAR PoE switches.

Installing and Troubleshooting Power over Ethernet (PoE)

WHITE PAPER A Guide to Successful Installation of Power over Ethernet Download PDF Overview Years ago, someone conceived the idea of delivering low-voltage

## PoE Troubleshooting: Common PoE Errors and Solutions

How to accurately identify the source of PoE errors and minimize PoE troubleshooting time? This article will detail three common PoE faults and

## PoE Switch Reliability Improvement Checklist: Best

This article will walk you through troubleshooting PoE switch problems, address common issues, and a checklist for improving PoE Switch Reliability. If you're

## PoE Troubleshooting: Common Problems and Solutions

Insufficient Power - First, check the powering switch, its power management configuration, and if it's working properly. If that is fine, then check

## How to Troubleshoot PoE Issues on Cisco Switches: Catalyst 9300,

Learn how to troubleshoot PoE problems on your network, test if PoE is working, identify faulty PoE injectors, and check key components when power is not supplied to devices.

## Power over Ethernet: What is POE?

Can PoE deliver an Uninterruptable Power Supply? Power over Ethernet (PoE) does not inherently provide an uninterruptible power supply

## PoE Troubleshooting: Common Problems and Solutions

PoE has become a critical technology in this highly connected world of today to simplify data networking and power management in networks of all

## How to Troubleshoot a Poe Switch That's Not Working?

Conclusion Troubleshooting a PoE switch that's not working can seem daunting, but with systematic checks and a clear understanding of potential issues, you can often resolve the problem

## How do I troubleshoot problems with my NETGEAR PoE

This article provides troubleshooting information for common Power over Ethernet (PoE) problems with NETGEAR PoE switches. PoE and PoE

## No power on PoE Connection

Hi, We had a weird problem yesterday. One of our outlet port is providing connectivity BUT no PoE for IP Phone. We have changed the switch port, swtill same issue. Switch lights turn off

## Power over Ethernet (PoE) switch troubleshooting

To solve the power injection problem: When the failure happens, configure a new switch with same configuration, code and install in parallel to existing switch. Remove the cables one by

Challenges and solutions for PoE systems in Ethernet switches

Controlling power-sourcing equipment (PSE) in an Ethernet switch is complicated, however, given the limited capability from the power supply and the multiple power supplies that exist for redundancy in

Finding the best network switch: 12 top brands for 2025

Looking for the best network switch? Compare top brands for performance, security, and scalability. Find the right switch to keep your business

PoE Troubleshooting: The Common PoE Errors and

Common PoE faults include PoE switch not providing power, a PD powering off or reloading, and some PD powering on while others are not. Here

## Contact Us

For more information, pricing, or custom solutions, please contact us:

Website: <https://buglerdental.co.za>

Email: [sales@buglerdental.co.za](mailto:sales@buglerdental.co.za)

Phone: +27 71 549 2836

Address: 22 Impala Crescent, Waterfall Business Estate, Midrand, 1685, South Africa

This document is for informational purposes only. Specifications subject to change without notice.

